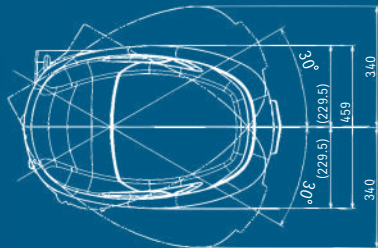


DIMENSIONS



|            |     |      |      |    |     |
|------------|-----|------|------|----|-----|
| TRANSOM: X | 641 | 1607 | 1076 | 29 | 121 |
| TRANSOM: L | 514 | 1480 | 956  | 28 | 80  |
| SPEC       | A   | B    | C    | D  | E   |

SPECIFICATIONS

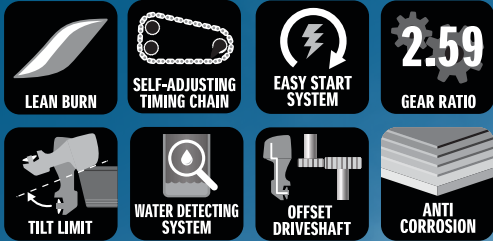
|                                     | DF100B                    | DF90A            | DF80A         | DF70A |
|-------------------------------------|---------------------------|------------------|---------------|-------|
| Starting System                     | Electric                  |                  |               |       |
| Recommended Transom Height mm (in.) | L: 508<br>X: 635          |                  |               |       |
| Weight (kg)                         | L: 157<br>X: 161          | L: 156<br>X: 160 |               |       |
| ENGINE TYPE                         | DOHC 16 - Valve           |                  |               |       |
| Valve Train Drive                   | Chain                     |                  |               |       |
| Displacement (cm³)                  | 1,502                     |                  |               |       |
| Maximum Output (kW)                 | 73.6                      | 66.2             | 58.8          | 51.5  |
| Bore and Stroke (mm)                | 75 x 85                   |                  |               |       |
| Operation Range (RPM)               | 5,700 - 6,300             |                  | 5,000 - 6,000 |       |
| Fuel Delivery System                | Electrical Fuel Injection |                  |               |       |
| Oil Pan Capacity (L)                | 4.3                       |                  |               |       |
| Alternator                          | 12V 27A                   |                  |               |       |
| Gear Ratio                          | 2.59:1                    |                  |               |       |
| Control System                      | Mechanical                |                  |               |       |
| Recommended Fuel                    | RON91 / AKI87             |                  |               |       |
| Propeller Selection (pitch)         | 13" - 25" (R/R)           |                  |               |       |

BODY COLOUR

BLACK | WHITE \*

\*Excluding the model DF80A

FEATURES



OPTIONAL EXTRA'S



THE  
ULTIMATE  
OUTBOARD MOTOR



DF100B/DF90A/DF80A/DF70A



SUZUKI MOTOR CORPORATION  
TAKATSUKA, CHUO, HAMAMATSU, JAPAN



**LIGHT**  
ON WEIGHT AND FUEL  
**COMPACT**  
FOR DIVERSE APPLICATION



**DF100B**  
Available in:  
BLACK & WHITE



**DF80A**  
Available in:  
BLACK



**DF90A**  
Available in:  
BLACK & WHITE



**DF90ATHL**  
Available in:  
BLACK



**DF70A**  
Available in:  
BLACK & WHITE



**DF70ATHL**  
Available in:  
BLACK

### DF90 & DF70 AVAILABLE WITH: MULTI-FUNCTION TILLER HANDLE



The multi-function tiller handle comes with various features such as a tachometer with warning indicators, a three-position angle adjustment bracket, a power trim and tilt switch, and a throttle grip friction adjuster. Additionally, it includes a troll mode switch, which activates the Suzuki troll mode and controls the engine's RPMs to idle up to 1200rpm at every 50rpm.

**DF100B**  
lightest in class  
**157kg**

**LARGEST REDUCTION  
GEAR RATIO 2.59:1**

These outboard engines have digital sequential electronic fuel injection, which monitors multiple factors such as throttle setting, RPM, temperature, and pressure. Fuel is injected into the combustion chamber at the optimal moment, providing smooth acceleration, crisp throttle response, and reliable starting in any temperature.

The Suzuki DF100B, DF90A, DF80A, and DF70A outboard motors cater to different boating requirements. These outboard motors are suitable for small and large boats that require nimble performance, power, and efficiency. Suzuki is known for its excellent quality and innovative products, making these outboard motors a popular choice among boaters worldwide.

**DURABLE**  
**RELIABLE**

**POWERFUL**







## SELF-ADJUSTING TIMING CHAIN

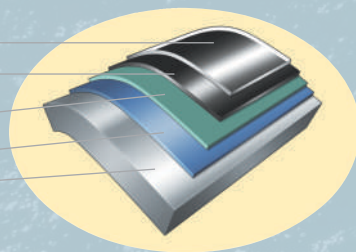
The timing chain that runs in an oil bath is completely maintenance-free and can be adjusted automatically by a highly reliable hydraulic tensioner. Compared to the belt-type chain, this type of chain is significantly more durable and long-lasting.



## SUZUKI ANTI-CORROSION FINISH

Suzuki's Anti-Corrosion finish is designed to provide the ultimate protection for your outboard. By applying a robust protective layer using high-strength bonding, the exterior parts made of aluminum are shielded against corrosion, ensuring unparalleled durability.

Resin Clear Topcoat  
Resin Black(or White)  
Basecoat  
Primer Undercoat  
Suzuki Anti-Corrosion Finish  
Suzuki Aluminium Alloy



## WATER DETECTING SYSTEM

The fuel filter system detects any water intrusion that may result in reduced power output and corrosion. In case any water is detected, the driver will be alerted with audio and visual warnings.



## OFFSET DRIVESHAFT

The outboard's center of gravity is moved forward by positioning the engine powerhead closer to the front, resulting in less vibration, more compact size and stable steering performance.



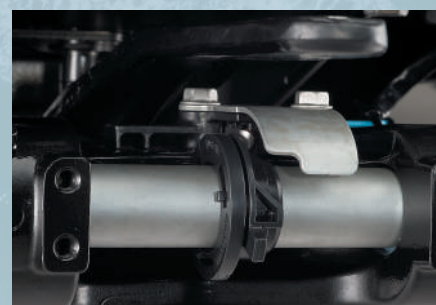
## 2 STAGE GEAR RATIO REDUCTION

The Offset Driveshaft system has two stages of reduction, allowing it to turn large propellers with high efficiency, powerful navigation, and quick acceleration.



## TILT LIMIT

A Tilt Limit System prevents outboard from tilting beyond a certain angle, avoiding damage to the boat or outboard.



# FUEL EFFICIENT



LEAN BURN

## LEAN BURN CONTROL SYSTEM

Suzuki's Lean Burn Control System predicts fuel consumption based on operating conditions, allowing the engine to run more efficiently with a lean air-fuel ratio. When combined with the Suzuki Precision Control electronic throttle and shift system, it offers precise control over engine RPM for improved fuel economy and smooth power transitions.



## EASY START SYSTEM

Simply turn the key and release, and the starter stays engaged until the engine starts. This system offers a smoother start of the engine.

## INNOVATIVE TECHNOLOGIES

# BUILD FOR DURABILITY & RELIABLE PERFORMANCE

## OPTIONAL EXTRA'S



## SUB WATER INLET

Two strategically placed water vents prevent engine overheating by preventing algae clogging.



## TROLL MODE

Suzuki's Troll Mode system provides precise control over engine speed at low rpms for constant trolling. The system uses an independent control switch to adjust revs in 50rpm increments from idle to 1,200rpm. It comes with a convenient control switch and tachometer.



## SUZUKI DIAGNOSTIC SYSTEM MOBILE PLUS (SDSM+)

SDSM+ is an advanced app for boats attached to SMG4 that provides a unique and satisfying boating experience. It allows you to plan your boat trip, check the condition of your boat and engines, inspect them before departure, and provide engine data to the dealer for maintenance.



## KEYLESS START SYSTEM

Start your outboard motor without inserting the key by simply having the key-fob nearby. This system helps deter theft more effectively than a traditional key system.

