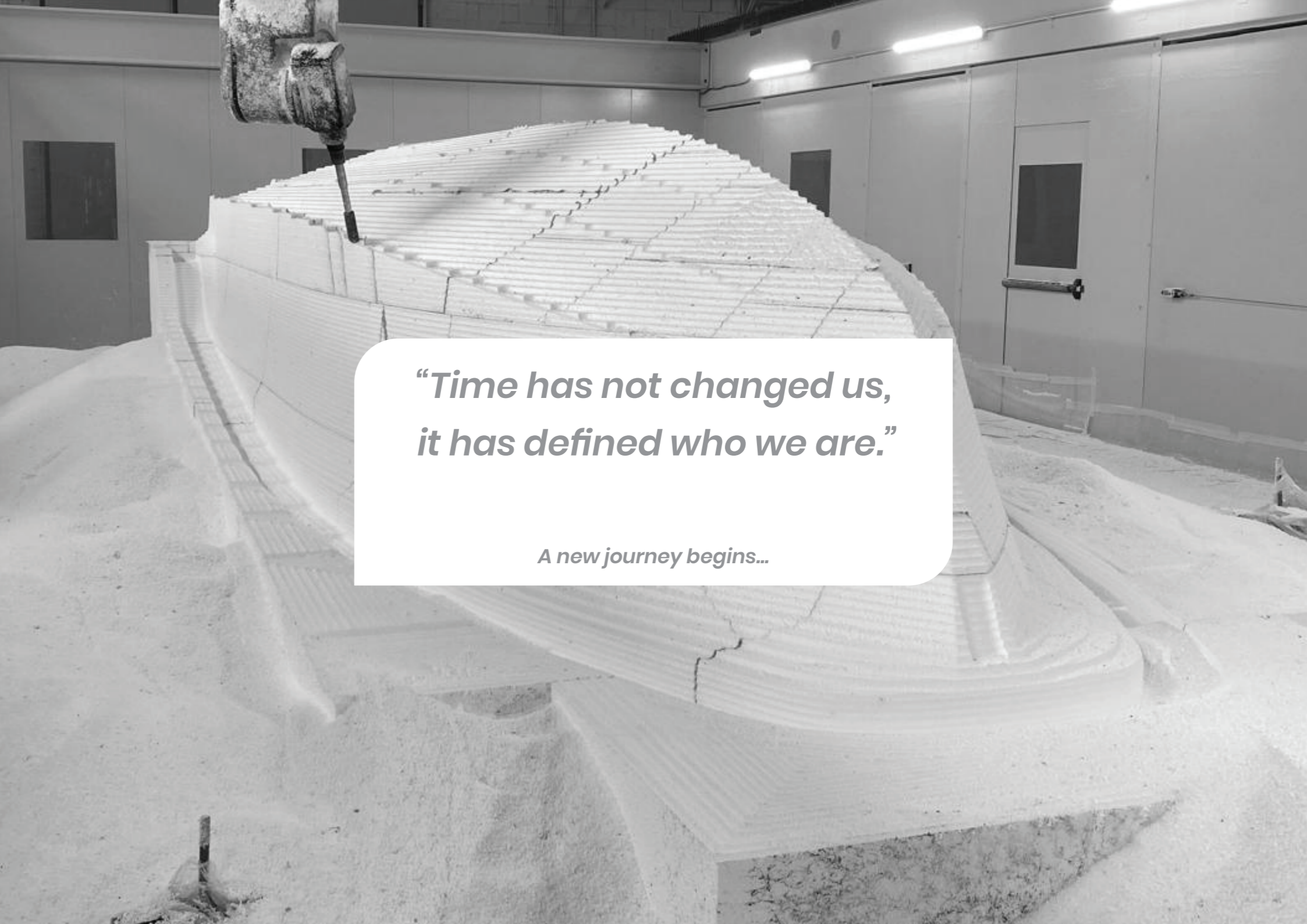


ALMA 27



*“Time has not changed us,  
it has defined who we are.”*

*A new journey begins...*

**A** miamo quello che facciamo.

Every boat is born from genuine passion, shaped by skilled hands and guided by hearts that share this passion every day. Here, time is not just a measure, it is a value. Experience, care and dedication come together to create something meant to be lived, shared, and remembered. We don't simply build boats, we cultivate a calling. Every gesture is driven by love for what we do, and by deep respect for those who came before us. Because only what is made with heart can truly endure, crossing time and sea, leaving its mark, and carving its place in history.

We are driven by what we love.



**A**miamo quello che facciamo.

Every boat is born from genuine passion, shaped by skilled hands and guided by hearts that share this passion every day. Here, time is not just a measure, it is a value. Experience, care and dedication come together to create something meant to be lived, shared, and remembered. We don't simply build boats, we cultivate a calling.

Every gesture is driven by love for what we do, and by deep respect for those who came before us.

Because only what is made with heart can truly endure, crossing time and sea, leaving its mark, and carving its place in history.

**L**egame con la storia.

Every line tells a story rooted in time, shaped by tradition, passed-down knowledge, and timeless gestures that continue to live on today. The past is never left behind; it is reinterpreted and brought to life in every creation.

We are the expression of those who came before us. Our strength lies in a living legacy of memory, respect, and craftsmanship, a heritage that continues to inspire everything we design.

It is the past that shapes the future, preserving a deep and enduring connection to tradition.

We are driven by what we love.

A bond with heritage.



**A**miamo quello che facciamo.

Every boat is born from genuine passion, shaped by skilled hands and guided by hearts that share this passion every day. Here, time is not just a measure, it is a value. Experience, care and dedication come together to create something meant to be lived, shared, and remembered. We don't simply build boats, we cultivate a calling. Every gesture is driven by love for what we do, and by deep respect for those who came before us. Because only what is made with heart can truly endure, crossing time and sea, leaving its mark, and carving its place in history.

**L**egame con la storia.

Every line tells a story rooted in time, shaped by tradition, passed-down knowledge, and timeless gestures that continue to live on today. The past is never left behind; it is reinterpreted and brought to life in every creation. We are the expression of those who came before us. Our strength lies in a living legacy of memory, respect, and craftsmanship, a heritage that continues to inspire everything we design. It is the past that shapes the future, preserving a deep and enduring connection to tradition.

**M**odelliamo il futuro.

Charting our course by following the wake of the past, we carry forward a dream that began over fifty years ago. We look ahead with clarity, where vision, innovation, and sensitivity converge to shape the boats of tomorrow, while never losing what makes them authentic. We imagine the future through the hands of today, giving form to new lines, new spaces, and new ways to experience the sea, all while staying true to who we are and what we believe.

We are driven by what we love.

A bond with heritage.

Shaping the future.



**A**miamo quello che facciamo.

We are driven by what we love.

Every boat is born from genuine passion, shaped by skilled hands and guided by hearts that share this passion every day. Here, time is not just a measure, it is a value. Experience, care and dedication come together to create something meant to be lived, shared, and remembered. We don't simply build boats, we cultivate a calling. Every gesture is driven by love for what we do, and by deep respect for those who came before us. Because only what is made with heart can truly endure, crossing time and sea, leaving its mark, and carving its place in history.

**L**egame con la storia.

A bond with heritage.

Every line tells a story rooted in time, shaped by tradition, passed-down knowledge, and timeless gestures that continue to live on today. The past is never left behind; it is reinterpreted and brought to life in every creation. We are the expression of those who came before us. Our strength lies in a living legacy of memory, respect, and craftsmanship, a heritage that continues to inspire everything we design. It is the past that shapes the future, preserving a deep and enduring connection to tradition.

**M**odelliamo il futuro.

Shaping the future.

Charting our course by following the wake of the past, we carry forward a dream that began over fifty years ago. We look ahead with clarity, where vision, innovation, and sensitivity converge to shape the boats of tomorrow, while never losing what makes them authentic. We imagine the future through the hands of today, giving form to new lines, new spaces, and new ways to experience the sea, all while staying true to who we are and what we believe.

**A**nima del nostro lavoro.

The Soul of our work.

At the heart of every boat, we create lies something unseen but deeply felt, born where human touch, vision, and emotion converge in quiet harmony. It is here that matter takes on new meaning, and a boat becomes something far more intimate: a part of the lives of those who choose it. Each creation holds a presence, subtle but unmistakable. It is shaped by care, guided by intuition, and infused with a sensibility beyond measure. It is this invisible essence that transforms form into emotion and turns every journey into a story that endures long after the horizon fades.





More than fifty years ago, we entrusted the sea with our very first vision. Since then, we have never stopped following its call.

We have sailed uncharted routes and discovered new waters, turning every mile into experience, every decision into character. Time has not changed us – it has defined who we are.

Today, honouring the coordinates that have always guided us, ALMA sets a new course.

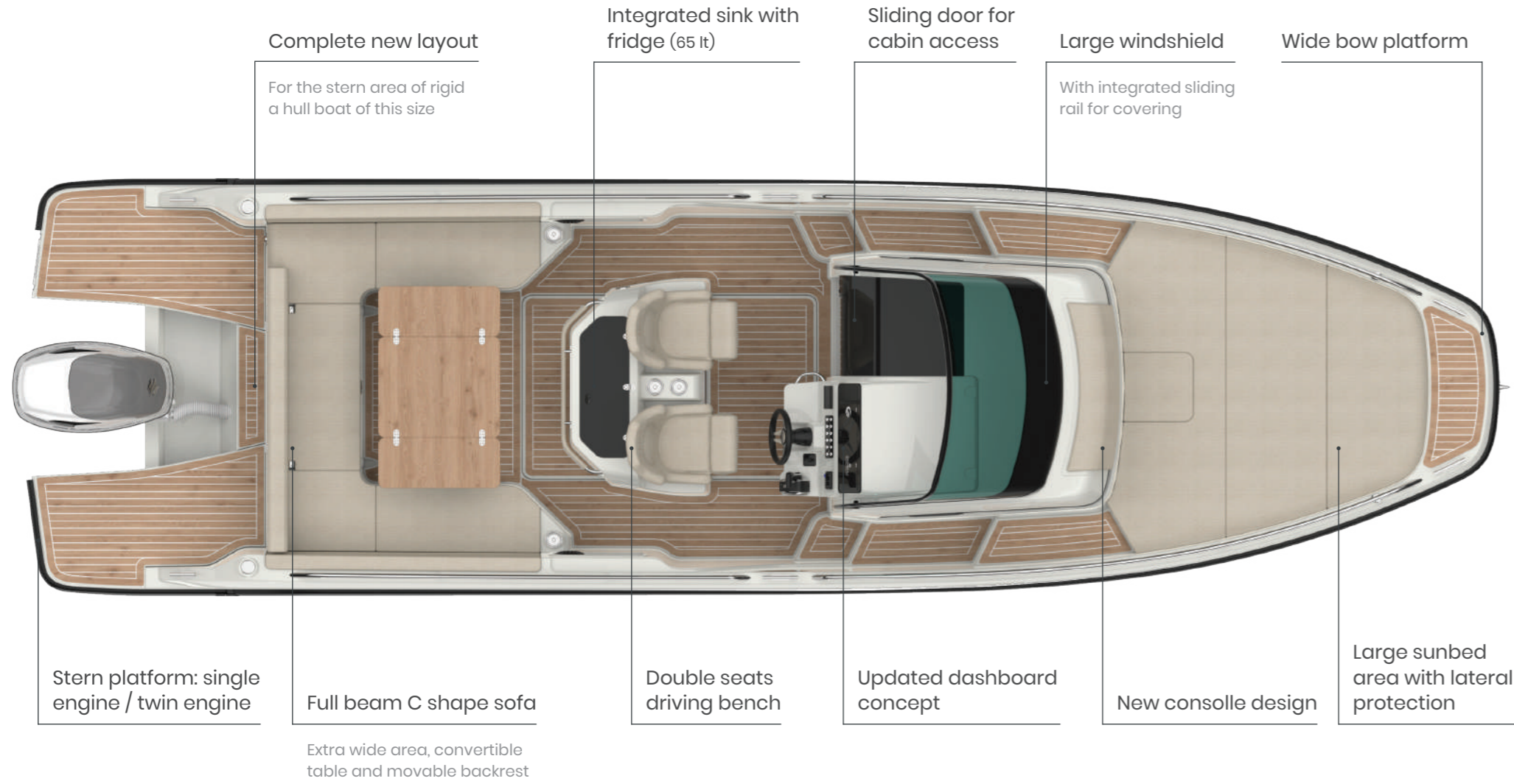
A line shaped by heritage, stretching boldly into the future. A balance between innovation and precision, between craftsmanship and sensitivity.

Spaces redesigned, a layout that breaks conventions without raising its voice. An essential design where every line has purpose, and nothing is left to chance.

This is more than just a boat. It's a place to share moments, to experience the sea with loved ones, and to cherish the truth that authentic luxury lies in the journey together.

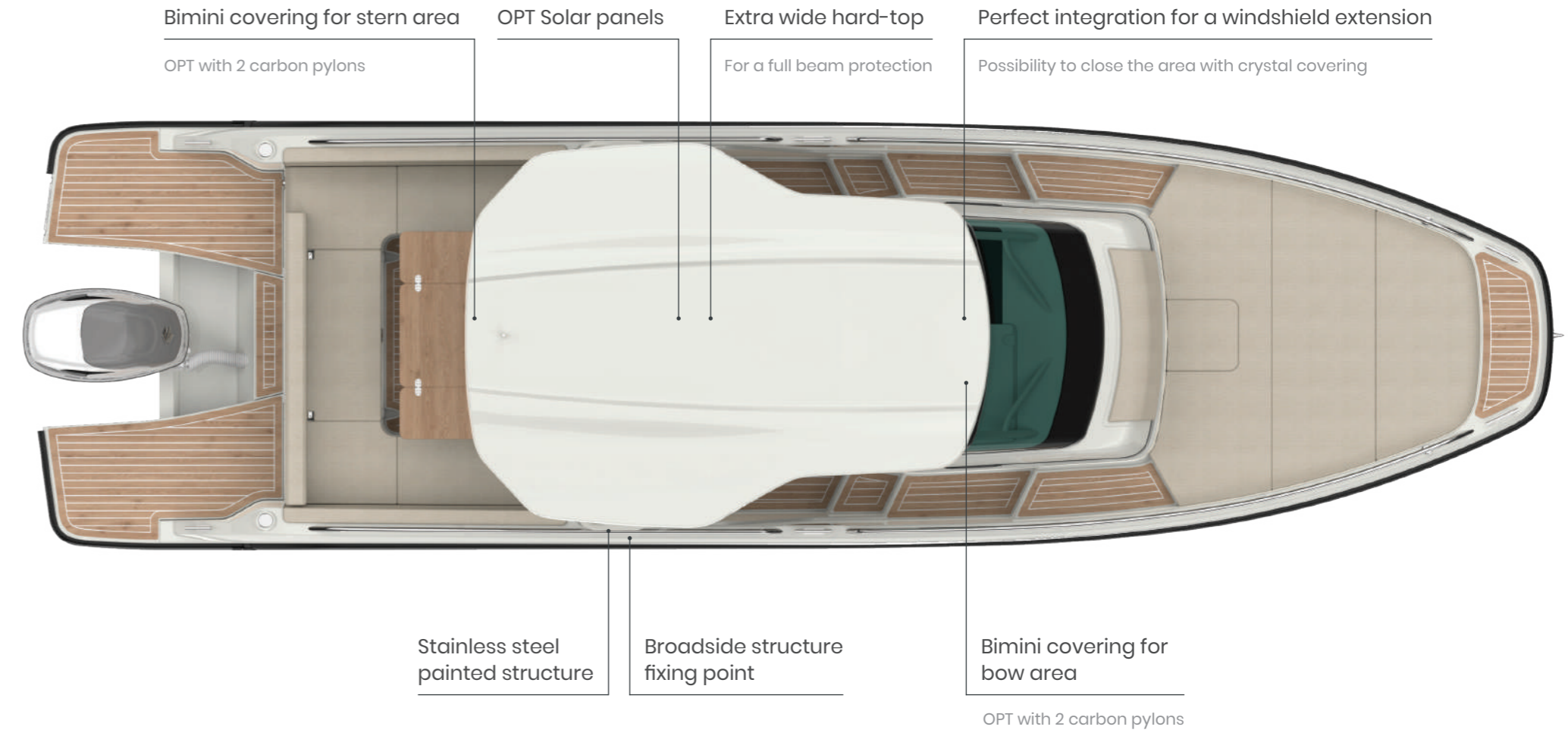
# DECK LAYOUT.

*New era, new layout.*



# HARD TOP.

*Evolution of hard top solution.*



## DETAILS.

*With refrigerator and integrated sink*



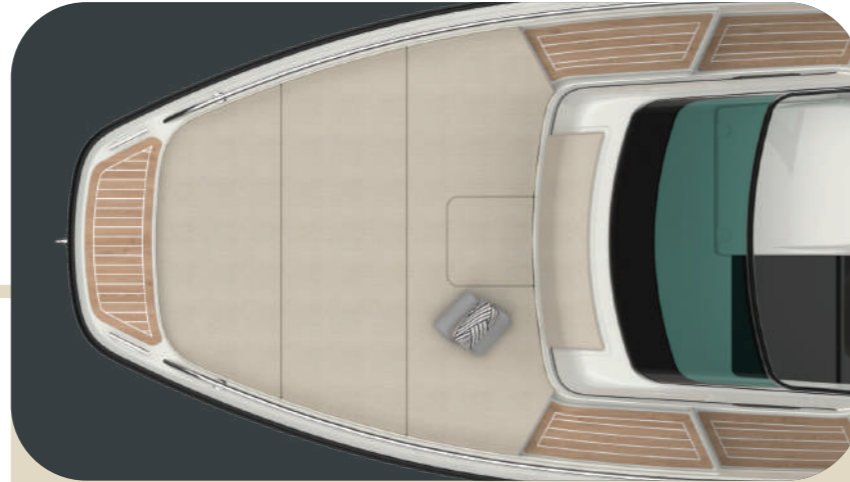
*Organic shape for technical element installation*



*Full beam layout C shape accomodation*

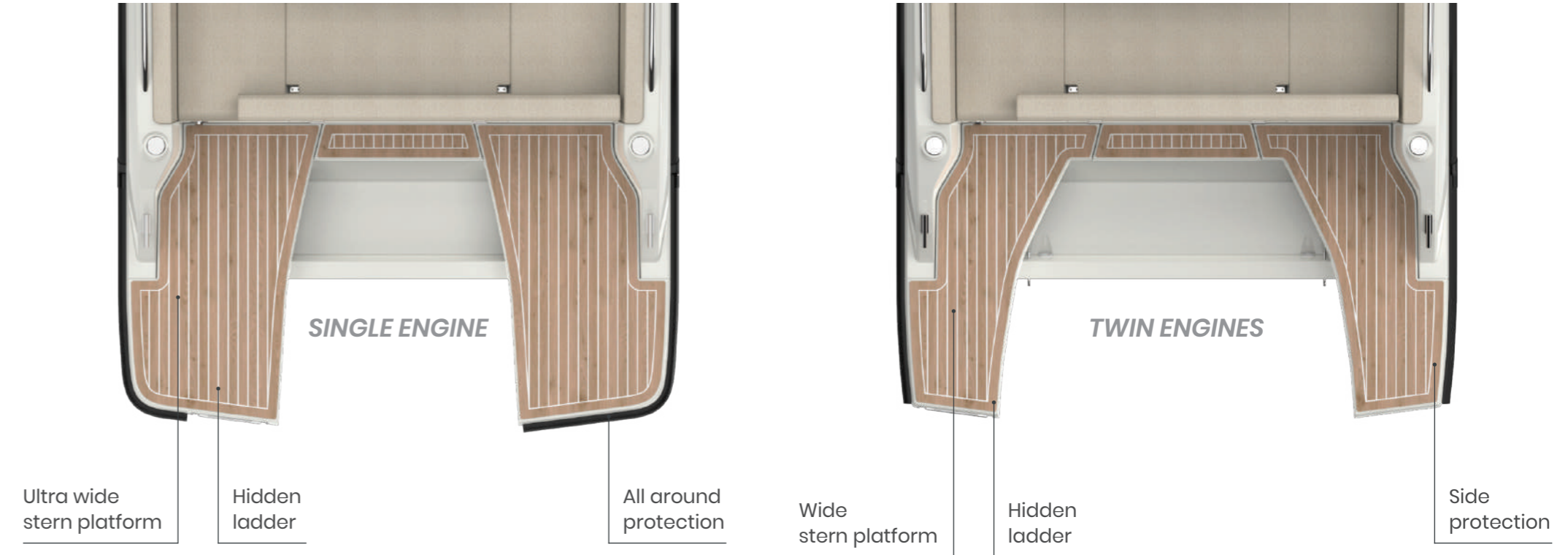


*Renew the classic solarium functionality*



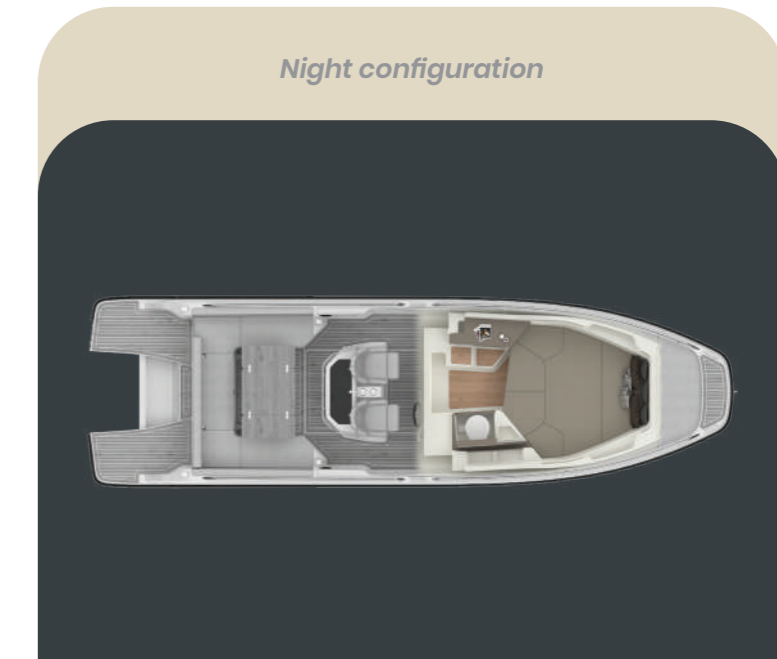
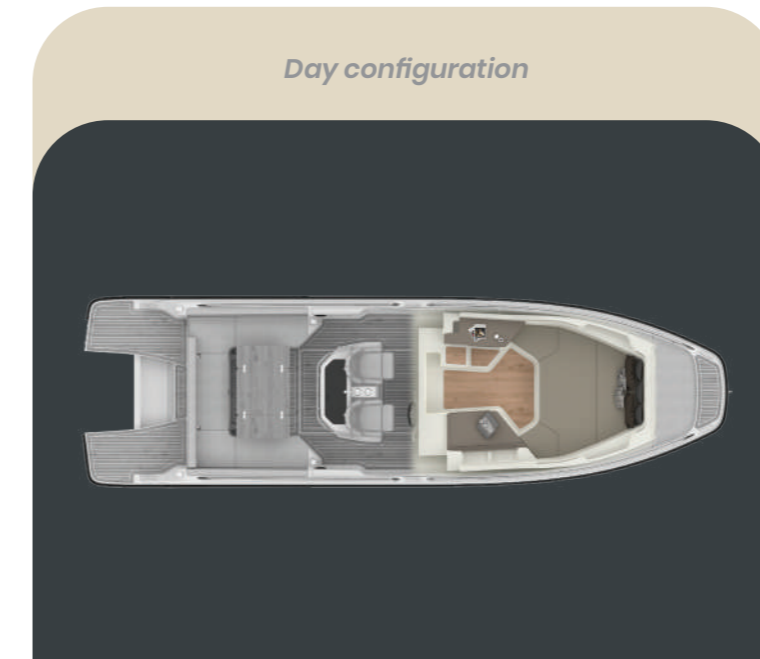
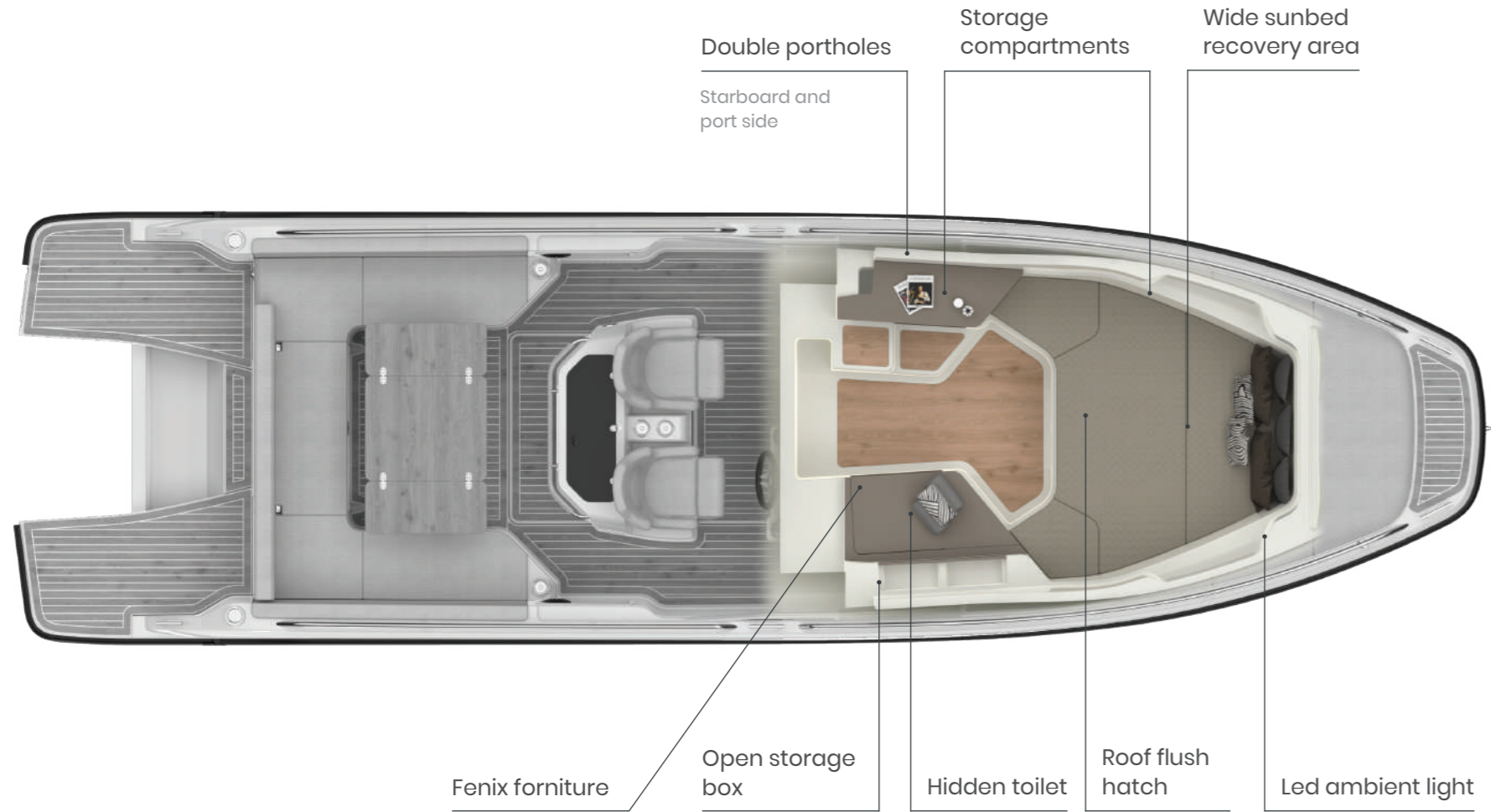
## STERN PLATFORMS.

*Single version and twin engines version.*



# INTERIOR DESIGN.

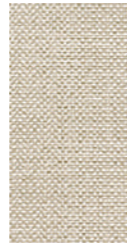
*Generous spaces and refined details.*



THE MOODBOARD.

Concept design.

MEDITERRANEAN



REFINED

COMFORTABLE



EMOTIONAL



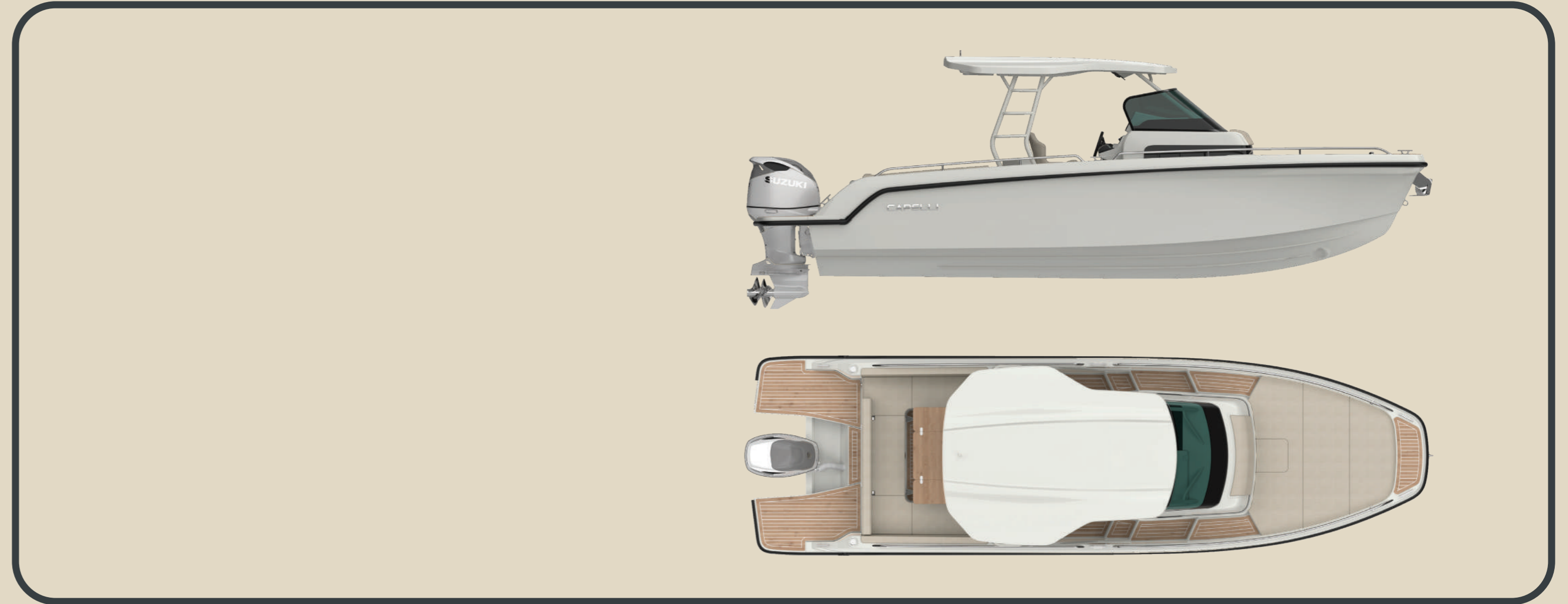




## TECHNICAL DATA.

<i>Lenght O. A.</i>	<b>8,68 m</b>
<i>Lenght L. H.</i>	<b>7,95 m</b>
<i>Beam O. A.</i>	<b>2,54 m</b>
<i>Beam B. H.</i>	<b>2,48 m</b>
<i>Maximum height</i>	<b>2,85 m</b>
<i>Draft</i>	<b>0,5 m</b> <i>Approax</i>
<i>Dry weight (without engines)</i>	<b>1900 Kg (STD)</b>
<i>Max engine power</i>	<b>1 x 350 / 2 x 200 HP</b>
<i>Persons capacity</i>	<b>12 / 8</b>
<i>Sleeping accomodation</i>	<b>n° 2</b>
<i>Fuel tank</i>	<b>390 L</b>
<i>Fresh water tank</i>	<b>94 L</b>
<i>Septic tank</i>	<b>41 L</b>
<i>Homologation category</i>	<b>D/C</b>
<i>Design</i>	<i>Cantieri Capelli Technical department</i>

## *Detailed technical information.*



## EQUIPMENT.

*Standard and optional.*

## CONFIGURATION.

*Optional sunshade features.*

### Standard equipment:

- CONSOLE DI GUIDA / STEERING CONSOLE
- CUSCINERIA COMPLETA / FULL CUSHIONS KIT
- DOCCIA / SHOWER
- FRIGORIFERO / REFRIGERATOR..... (65 lt)
- LUCI DI NAVIGAZIONE / NAVIGATION LIGHTS
- PANCA GUIDA CON PORTA BICCHIERI, LAVELLO E PATTUMIERA / STEERING BENCH WITH CUPHOLDERS, SINK AND TRASH-BIN
- TAVOLO POPPA / STERN TABLE
- SCALETTA A SCOMPARSA / HIDDEN LADDER
- SERBATOIO CARBURANTE / FUEL TANK.....(390 lt)
- SERBATOIO ACQUA DOLCE / FRESH WATER TANK ..... (94 lt)
- TIMONERIA IDRAULICA / HYDRAULIC STEERING
- VERRICELLO ELETTRICO / ELECTRIC WINCH
- CABINA ALLESTITA E RIVESTIMENTO INTERNO IN FLEXITEEK / FULL CABIN EQUIPMENT WITH FLEXITEEK FLOORING
- 6 BITTE DI ORMEGGIO / 6 MOORING CLEATS
- CARICATORI USB-USB C / USB-USB TYPE C CHARGIN POINT
- LUCI POZZETTO / DECK LIGHTS
- DIVANO DI POPPA A C CON VANI STIVAGGIO / C-SHAPE SOFA WITH STORAGE COMPARTMENTS
- CORRIMANI PRUA E POPPA IN ACCIAIO / BOW AND STERN HANDRAILS

### Optional equipment:

- ASTA DA SCI / SKI BAR
- BOILER ACQUA CALDA 220V / HOT WATER HEATER 220V
- COPRICONSOLE E COPRIPANCA / CONSOLE AND BENCH COVER
- COPRICONSOLE E COPRIPANCA CON H-TOP / CONSOLE AND BENCH COVER WITH H-TOP
- IMPIANTO 220 V / DOCKSIDE CURRENT TAP 220V
- FORNELLO PORTATILE / PORTABLE GAS COOKER
- TAVOLO ABBATTIBILE CON CUSCINO ADDIZIONALE POPPA / PULL-DOWN TABLE WITH ADDITIONAL SUNDECK CUSHION
- CHIUSURA PERIMETRALE ZONA CONSOLE E PANCA / FULL CLOSURE FOR DRIVING CONSOLE AND BENCH AREA (1)
- HARD-TOP CON VTR AVORIO E STRUTTURA VERNICIATA / HARD-TOP WITH IVORY GRP AND PAINTED STRUCTURE
- TENDALINO DI POPPA CON 2 PALI IN CARBONIO Ø 20 / STERN BIMINI WITH 2 CARBON PYLONS Ø 20 (1)
- TENDALINO DI PRUA CON 2 PALI IN CARBONIO Ø 20 / BOW BIMINI WITH 2 CARBON PYLONS Ø 20 (1)
- TENDALINO POZZETTO CON 4 PALI CARBONIO Ø 20 / BIMINI COCKPIT WITH 4 CARBON PYLONS Ø 20
- FRIGORIFERO CABINA 30 lt / CABINE REFRIGERATOR 30 lt
- RADIO CON 4 CASSE / STEREO WITH 4 SPEAKERS
- RIVESTIMENTO FLEXITEEK PLANCE DI POPPA E GRADINO PRUA / STERN PLATFORM AND BOW STEP FLEXITEEK FLOORING
- RIVESTIMENTO TOTALE FLEXITEEK POZZETTO / FULL FLEXITEEK COCKPIT FLOORING
- PULPITO DI PRUA CON MANIGLIE / BOW PULPIT WITH HANDLES
- PANNELLI SOLARI / SOLAR PANELS (MAX POWER CURRENT 10,8 A) (1)
- WC MARINO CON SERBATOIO ACQUE NERE / MARINE TOILET WITH SEPTIC TANK..... (41 lt)
- BARRE PORTATUTTO PER T-TOP / T-TOP ROOF BARS (1)
- ELICA DI PRUA / BOW THRUSTER
- PLANCE DI POPPA BIMOTORE / STERN PLATFORM FOR DOUBLE ENGINE

(1) SOLO CON HARD-TOP / ONLY WITH HARD-TOP

*Hard - top*



*Hard - Top & Bimini with 2 carbon pylons*



*Stainless steel Bimini for roll-bar*



*Bimini with 4 carbon pylons*



## MISSION.

### *Quality and attention to detail.*

**Quality and emotion** as keywords to describe our mission. From project management to the official presentation, each model has to represent the **authentic spirit** and tradition of the brand. Each customer worths to perceive the solidity, the reliability and the passion of Capelli. Cantieri capelli is a **dream seller**, our clients are seeking for emotions to share with their beloved ones.

## VISION.

### *Innovation and industrialization.*

- **Research and development** implementation to better industrialize the production process,
- Dedicated exploration for **new markets** expansion: new partners with which establishing new long-lasting agreements based on reliability, passion and dynamism,
- Increase the brand-awareness and the inner values of our history, tradition and **made in Italy**.

For a long time, I have waited.  
To be seen. To tell my story.  
To reveal the essence of who I am.

Because, like you, I carry a soul.

See you soon, on the water.

# ALMA 27



Cantieri Capelli S.r.l.  
Via delle industrie 19, 26020 Spinadesco - Cremona (Italy)  
Tel: +39 0372 491399  
E-mail: info@cantiericapelli.it - Web: www.cantiericapelli.it

